

尊敬的贵宾,

Dear Guest,

感谢您对深圳半山壹棠服务公寓感兴趣。

Thank you for your interested in CM+ Serviced Apartment Shenzhen Hillside.

深圳半山壹棠服务公寓坐落于风景迤邐、环境优美的蛇口半山高级住宅区。信步可达深圳顶尖的美伦会所、充满异域风情的太子广场、著名的海上世界，邻近蛇口商业行政区及多所国际学校。

深圳半山壹棠服务公寓由 10 座设计新颖、错落有致的楼宇组成。从格调雅致的一房行政套房至两房复式套房，每间公寓均拥有与卧室独立分开的客厅及用餐区，并配备设施齐全的厨房，让您无论是长期居住还是休闲旅游均能在此找到合适的居住空间。一天繁忙的工作后，您可到健身房里挥汗淋漓地锻炼，也可在室内恒温泳池中尽情地畅游，公寓所附带的一系列休闲设施能让您得以充分地放松。

深圳半山壹棠服务公寓前身是凯德集团旗下的全球知名的服务公寓及酒店运营商雅诗阁。挚诚为环球工作或生活的人士提供温馨家园。在驻留期间，您亦可向我们的团队获取建议，参与住客活动，融入当地生活，尽情体深圳半山壹棠服务公寓带来的舒适与自在。

Located in the heart of Shekou's commercial and cultural district, CM+ Serviced Apartment Shenzhen Hillside is part of an integrated development with Maillen Club - an exclusive lifestyle club with recreational facilities and restaurants. It is a stone's throw from Sea World, which is an entertainment and leisure belt, key office towers, food and beverage outlets and international schools - essential conveniences and comforts for expatriate communities.

CM+ Serviced Apartment Shenzhen Hillside is a collection of 10 blocks of luxury serviced residences and well-appointed boutique hotel rooms. Our guests can choose from various apartment types ranging from studios to two-bedroom penthouses. Our modern residences boast private balconies, a fully-equipped kitchen, LCD television, and an integrated home entertainment.

Promoting balanced lifestyles, we organise recreational residents' programmes that enable you to meet other individuals and establish enduring relationships with ease.

根据您的询价要求，我们提出以下报价方案，供您参考。

To cater for your request, please kindly refer to the below proposal that we would like to offer for your consideration.

### 短租报价(Daily Quotation)

房型 Room type	面积 sq. m	床型 Beds	日租 Daily rent	早餐
行政单房公寓 Studio Executive	59sqm	1.8m*2m	RMB500	单早 1 breakfast
行政单房公寓(双床) Studio Executive(Twin)	59sqm	1.35m*2m*2	RMB550	双早 2 breakfasts
豪华行政单房公寓 Studio Premier	63sqm	1.8m*2m	RMB600	单早 1 breakfast
一房行政套房 One bedroom Executive	75sqm	1.8m*2m	RMB700	单早 1 breakfast
两房豪华套房 Two-bedroom Deluxe	97sqm	1.8m*2m 1.5m*2m	RMB1000	双早 2 breakfasts

- 以上价格已包含管理费和服务费。
- The above rates are inclusive of 6%VAT.
- 日租包含每日卫生打扫;
- Including daily cleaning room for Daily rate;
- 免费宽带和Wifi
- Complimentary internet accessing in guest rooms including WIFI and broadband;
- 24 小时前台服务
- 24 hours self-service Guest Service Desk and Security;
- 免费使用部分会所设施(即泳池和健身房)。
- Complimentary using of gym facilities, incl. gym, indoor heated swimming pool;
- 停车位
- Parking space charge

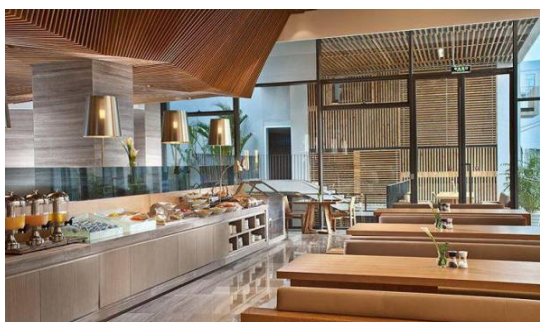
### 增值服务(需另收费) Extra Charges:

- 机场接送服务
- Airport Transfer Service
- 额外的家政服务
- Extra Housekeeping Service
- 洗衣服务
- Laundry Service

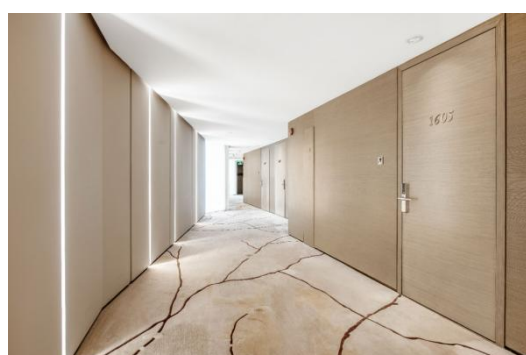
**取消政策:** 提前 48 小时取消预订的房间将不收取房费;否则取消预订将收取首晚的房费。

Cancellation Policy: No room charge will be charged if the reservation is cancelled 48 hours in advance; Otherwise, the first night's room rate will be charged.

## 公区 (Public Area)



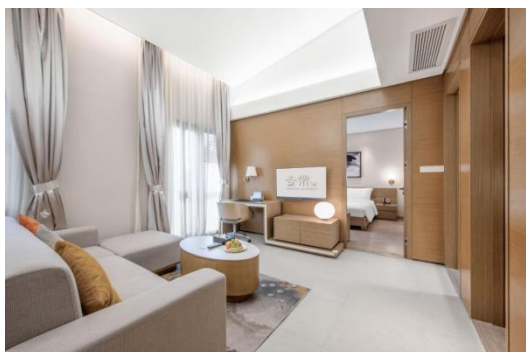
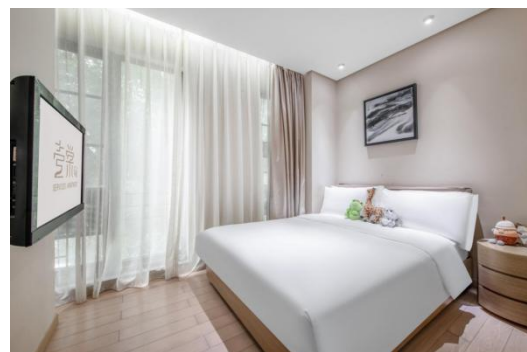
## 行政单房公寓 (Studio Executive)



### 一房行政套房 (1 Bedroom executive)



### 两房豪华套房 (2 Bedroom deluxe)



**健身房和游泳池 ( Fitness Club & Swimming pool )**



**条款&条件 Terms & Conditions:**

- 以上报价至 2025 年 12 月 31 日;
- 需提前预订, 以确认是否有房间为准。
- The quotation is valid before 31st-Dec, 2025 Rates are subject to change and subject to availability after option date.
- Advance reservation is required, and room is subject to availability upon confirmation.

销售员 Contact person: Serena Cao

职位 Title: 销售经理 Sales Manager

联系电话 (手机) Tel: 0755-21600128, 18676713513

电子邮件 E-Mail: caoshiyul@cmhk.com

物业: 深圳半山壹棠服务公寓 CM+ Serviced Apartment Shenzhen Hillside

地理位置: 深圳市南山区沿山路 3 号

Address: No.3 Yanshan Road, Nanshan District, Shenzhen