

Session 1 Summaries

English Language Learning (ELL) Specialists

Date: October 15, 2024

Hosts: Kairavi Oza Bond, Celina Mathews

Tech Tools for Differentiating Instruction

Innovative tech tools that help to differentiate instruction for multilingual learners include Diffit, MagicSchool, Quill, IXL, and ESL-bits.

AI for Evaluating Writing and Personalising Learning

AI can be harnessed to evaluate writing needs for multilingual learners and identify specific teaching points for language educators to consider when building personalised learning experiences.

Visible Literacy Strategies for Multilingual Learners

Visible literacy strategies like mind maps, graphic organizers, diagrams, literacy walls, and leveled texts can be incorporated to support multilingual learners in accessing academic content.

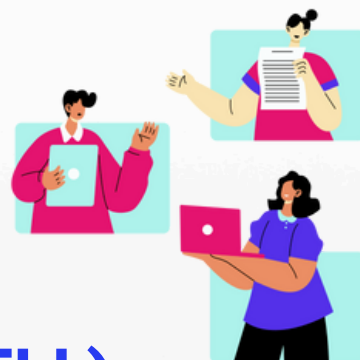


Additional Resources

- * [Magicschool.ai](https://magicschool.ai)
- * [Commonlit.org](https://www.commonlit.org/)
- * [Getepic.com](https://www.getepic.com/)
- * [Getepic.com](https://www.getepic.com/)
- * [IXL.com](https://www.ixl.com/)
- * [Session 1 Recording](#)

Join us to connect and learn with your peers!

#GiveALittleGainALot



Session 2 Summaries

English Language Learning (ELL) Specialists

Date: November 26, 2024

Hosts: Kairavi Oza Bond, Celina Mathews

Engage Parents and Students with Shared Learning Resources

Actively engage with both parents and students by sharing learning resources on a regular basis. A popular example included creating and updating a Padlet that parents and students can use as a one-stop-shop for vocabulary, readings, language learning tasks, and more.

Multilingual Resources Foster Inclusion and Confidence

Multilingual resources help students feel comfortable and confident in their learning environment! Multilingual posters, texts, and supporting L1 conversations are powerful in helping our learners feel included and welcomed.

Build Connections: Learn Their Language, Embrace Their Culture

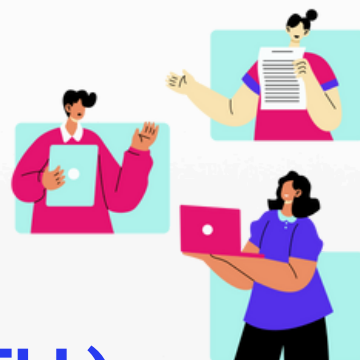
Build positive connections with MLLs by being curious about their culture, and attempting to learn their home language.



Additional Resources

- * [Session 2 Recording](#)
- * [Session 2 Slide Deck](#)

Join us to connect and learn with your peers!
#GiveALittleGainALot



Session 3 Summaries

English Language Learning (ELL) Specialists

Date: February 25, 2025

Hosts: Kairavi Oza Bond, Celina Mathews

Effective Formative Assessments for Language Growth

Formative assessments play a crucial role in tracking multilingual learners' progress. Participants discussed strategies such as designing tasks that extend students' Zone of Proximal Development (ZPD) and using real-time data to adjust instruction. The conversation emphasized the importance of scaffolding, ensuring assessments are meaningful, and incorporating student self-reflection to deepen language acquisition.

Balancing Equity in Summative Assessments

Ensuring equity and accessibility in summative assessments was a major focus. Educators shared how assessments must be designed to measure actual content knowledge rather than language barriers. Strategies included offering differentiated assessments, allowing multiple ways for students to demonstrate understanding, and analyzing summative data to refine teaching practices.

Navigating Language Proficiency Assessments

The discussion on standardized language proficiency assessments highlighted the need for validity and reliability. Participants explored the balance between using formal assessment tools and incorporating teacher observations to get a full picture of students' abilities. There was also a discussion about the role of translanguageing versus direct translation and how to ensure assessment tools reflect authentic language use.

Additional Resources

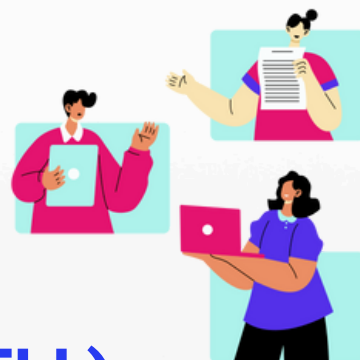


✱ [Session 3 Recording](#)

✱ [Session 3 Slide Deck](#)

Join us to connect and learn with your peers!

#GiveALittleGainALot



Session 4 Summaries

English Language Learning (ELL) Specialists

Date: April 22, 2025

Hosts: Kairavi Oza Bond, Celina Mathews

Understanding Multilingual Learners with Exceptionalities

The community discussed how ELs with exceptionalities must simultaneously learn English, grasp academic subjects taught in English, and navigate challenges associated with potential barriers to learning. For those with high language and learning support needs, this workload can be very demanding. A brief from ALTELLA was shared which introduces a framework that maps students along two continua: language-related needs and disability-related needs. This results in four quadrants, each representing different combinations of needs.

Practical Strategies for Supporting MLLs with Exceptionalities

Practical strategies were shared for supporting MLLs with exceptionalities. Discussion emphasized the value of scaffolding, individualized learning plans, and ongoing assessments to adjust support as needed. Sensory materials, breaking down tasks, and using visuals were noted as helpful while also realizing that specific supports are dependent on individual student needs. Participants also discussed how to collaborate with learning support teams to provide holistic support for these learners.

Resources and Tools for MLLs with Exceptionalities

Resources were shared to aid in supporting MLLs with exceptionalities and provide professional learning to help educators gain confidence in best supporting students with dual service needs. View the ALTELLA brief reviewed during the session below.



Additional Resources

- * [Session 4 Recording](#)
- * [Session 4 Slide Deck](#)
- * [A Framework for Understanding English Learners With Disabilities: Triple the Work](#)

Join us to connect and learn with your peers!

#GiveALittleGainALot