

Session 1 Summaries

College Counselors

Date: October 31, 2024

Hosts: John Liu, Pearl Yeon-Keong Noh

Trends in Chinese University Applications

ED Impact and AI Adoption Chinese university applications are increasing, driven by aspirations for international education. Early Decision (ED) options are shaping application strategies, while the integration of AI streamlines the application process and enhances selection. These trends are transforming the landscape of higher education applications

Building Resilience Together

Shared Challenges and Collaborative Solutions Various groups encounter common obstacles such as limited resources and communication issues. By openly sharing their experiences and strategies, these groups develop effective solutions together, fostering innovation and strengthening community resilience.

Strategies for Enhanced Student Support

Shared Best Practices in College Counseling College counselors exchange strategies such as personalized guidance, effective resource use, proactive outreach, and data-driven techniques. This collaboration enhances student support, streamlines admissions processes, and improves overall counseling effectiveness, leading to better educational outcomes.

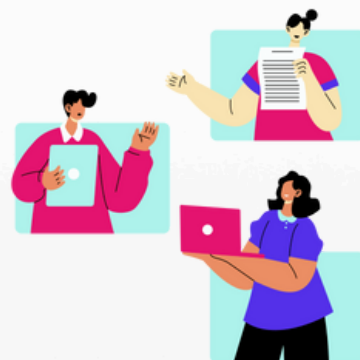


Additional Resources

- * [Session 1 Slide Deck](#)
- * [Session 1 Recording](#)
- * [Resources](#)

Join us to connect and learn with your peers!

#GiveALittleGainALot



Session 3 Summaries

College Counselors

Date: March 2025, 2025

Hosts: John Liu, Pearl Yeon-Keong Noh

Guest Speakers: JP Yates and Allan Birimac

Understanding Hidden Gem Schools

Hidden gem schools often stand out for their unique programs and specialized opportunities, rather than broad national rankings. These schools might not have the widespread recognition of Ivy League or other top-tier universities, but they offer exceptional education in specific fields, like research or experiential learning. Examples include schools like Wagner College, which, despite its small size, boasts excellent internships and unique hands-on learning opportunities.

Financial Aid for International Students

Finding colleges that offer financial aid to international students requires careful planning. Utilizing tools like the Common Data Set and ISFAA, families can evaluate a school's financial aid offerings and determine how much aid they might expect. Understanding how assets like home equity impact aid eligibility can also help families build a realistic college list that fits their financial situation, ensuring they apply to schools that provide appropriate support.

Empowering Counselors Through Practical Knowledge

Building on our commitment to support both students and their families, we also emphasize the importance of empowering college counselors with practical knowledge. The feedback from Alison Crozier illustrates how our sessions deliver actionable insights that have a direct impact on their work. By equipping counselors with timely, relevant information, we create a ripple effect that enables them to have meaningful conversations with students and their families. Together, we are not just sharing knowledge; we are shaping the future of our students and ensuring they have access to the resources they need to thrive. Thank you for being an essential part of this journey!



Additional Resources

- * [Session 3 Slide Deck](#)
- * [Session 3 Recording](#)
- * [Colleges with Financial Aid for International Students](#)

Join us to connect and learn with your peers!

#GiveALittleGainALot



Session 4 Summaries

College Counselors

Date: 24 April 2025, 2025

Hosts: John Liu, Pearl Yeon-Keong Noh

Guest Speakers: Jim Faherty and Kim Tulloch Wynn

Jim's Presentation on Stress Management

Jim provided valuable insights into the common stressors faced by college counselors, particularly the challenges of workload management and balancing personal boundaries. He highlighted practical time management strategies, such as prioritizing tasks, delegating when possible, and creating a personal routine. Jim also emphasized the importance of setting physical boundaries in the workspace to foster a healthier work-life balance, encouraging counselors to manage their stress by staying organized and making time for themselves.

Kim's Approach to Burnout Prevention

Kim discussed the importance of setting clear boundaries, creating support networks, and prioritizing self-care to combat counselor burnout. She shared her personal experience of balancing a demanding career while maintaining professional growth and family responsibilities. Kim introduced the concept of "professional years" and discussed how career stages, including the pressures of career focus and managing multiple responsibilities, affect mental health. She encouraged counselors to embrace vulnerability and acknowledge when they need support to foster a healthier workplace culture.

Effective Collaboration and Community Support

The session underscored the value of collaboration within the counseling community, particularly in sharing strategies and experiences. By discussing their own challenges and successes, members were able to create meaningful connections that support their professional development. We encouraged participants to continue collaborating with peers to build stronger professional networks and enhance their practice, ensuring a positive impact on student support systems.



Additional Resources

- * [Session 4 Slide Deck](#)
- * [Session 4 Recording](#)
- * [Tech-Neill-ogy](#)
- * [Understanding Burnout Among College Counsellors and How to Beat It!](#)